

SANLORENZO SX88

€4,900,000 | Year: 2019 | Length: 87.6 ft | Singapore



SANLORENZO SX88

OVERVIEW

Beautifully appointed and carefully maintained 2019 Sanlorenzo SX88 for sale.

Graceful in her lines, yet robust and steady in the water, this particular SX88 is beautifully specified with a light and modern interior using different wood, marble and fabric textures to provide a subtle yet lively and interesting decor.

The SX is Sanlorenzo's fleet of revolutionary "crossover" yacht with a fast displacement hull, powered by triple Volvo IPS1050 engines, it cruises at a comfortable 20 knots with a top speed around 23 knots. As always standing out against competing shipyards, a jet-tender of up to 4.5m can fit on the SX88's swim platform (a rare feature in this size range).

Sophisticated owners will appreciate the floor to ceiling windows on the main deck, with the main saloon bathing in natural light, making the entire space seem even bigger than it already is.

Another beautiful design feature of the SX is the interior floating staircase, which leads up to the flybridge, covered by a smartly operated hardtop for ample shade with plentiful space where guests can enjoy the views.

The flybridge is an oasis of calm with free standing designer furniture and a well-equipped Boffi galley—giving the feeling of a luxury villa on the sea.

This sleek Italian motor yacht presents an incredible opportunity for you to join the elite family of Sanlorenzo owners worldwide.

MEASUREMENTS

Length: 87.6 ft

Beam: 23.62 ft

Displacement:

PROPULSION

Engine No: 1

Engine Make: Volvo

Engine Model: IPS 1050

Engine Fuel Type: diesel

Engine Power: 800HP

Engine No: 2

Engine Make: Volvo

Engine Model: IPS 1050

Engine Fuel Type: diesel

Engine Power: 800HP

Engine No: 3

Engine Make: Volvo

Engine Model: IPS 1050

Engine Fuel Type: diesel

Engine Power: 800HP

BOAT DETAILS

Steering System

Joystick Control

Communications

1x Radome SEATEL ST24E (dummy)
1x TV-Sat Antenna SEATEL ST24E
Modem Internet WIFI 4G + Hotspot Antenna for port WIFI

Covers, Canvas and Cushions

Bow area bimini top
Sun awning for the stern area of fly behind the hard top
Stern sun canvas with 4 poles

Electrics and Charging

Kohler generator 25kw (230V) 3,620 hours as of Feb 2024
Upgraded second generator 25kW
2 automatic battery chargers 100A/24V DC for service batteries
1 automatic battery charger 50A/24V DC for engine batteries
1 battery charger 12V 25A for generator batteries (add)
1 automatic battery charger 20A/24Vdc for bow thruster batteries
Inverter 24V/230v, 1500W

Navigation and Monitoring System

Raymarine integrated ship monitoring system
Raymarine DIAMOND navigation package (diff. from std)
3 X Axiom 16" XL chartplotters screens
Ray 90 VHF
Ray AIS700
Raymarine Open array Magnum 12kw 48" – 72Nm
FLIR M232 thermal camera
Rs150 GPS
Searchlight with control in main helmstation and flybridge
Additional touch screen monitor 12" (ship monitoring system) in crew area
CCTV IP : 2 in cockpit, 2 in engine room

Entertainment System

Salon – TV 65", hi/fi system, home theatre kit with tuning amplifier, CD/DVD, 4 speakers and subwoofers with connection to aft cockpit.
Dining area – 2 speakers connected to salon hifi system
Owner cabin – TV 40", HI/FI system, home theatre kit with tuning amplifier, CD/DVD player, 2 speakers and subwoofer.
Vip Cabin – TV 32", music stereo system with 2 speakers
Guests Cabins – TV 22", music stereo system with 2 speakers
Bow area – radio stereo w/ bluetooth function and 2 speakers
Cockpit – 2 speakers recessed into the cockpit ceiling, connected to the HI/FI system in the Saloon
Beach area – 2 speakers recessed into the sides of the Beach area
Flybridge – TV 40" with lift system, player unit with 4 speakers.

Exterior Equipment

Bow external table with manual hi lo system
Free standing shower for aft Beach area
Hydraulic swim platform
Electro-hydraulic gangway & swim ladder with teak steps & frame in stainless steel
Electro-hydraulic davit for tender / water toys launching (max weight 1,000kg)
No.4 Underwater lights 7000 lumen
Electric blades opening roof for Hard Top

Yachting Freedom since 1984



T: +852 25555 8377

Teak decking on cockpit, side deck, bow, flybridge & swim platform
Air conditioning on fly bridge

Mechanical Equipment

Two Italwinch electric reversible anchor windlasses 2300W, 24V
CMC Electric fin stabilizers
Engine room FM200 fire fighting system override and control panel

Galley Equipment, Refrigeration and Laundry

Corian bar cabinet on flybridge – Miele electric grill, Vittrifigo icemaker & chiller
Miele DGC 6869 XXL steam combination oven (diff from std)
Bosch 80cm PXE875BB1E induction cooktop
Miele WMV960 washing machine (diff from std)
Miele TMV840 9KG drying machine (diff from std)
Miele G6660 dishwasher (diff from std)
Mabe ORE24VGFWW SS fridge in galley
Frigonautica drawer fridge in dining area
Wine cooler 23 bottles in dining area
Microwave in crew mess
Undercounter fridge in crew area

Water System

Water maker Idromar 230 lt/h
Additional second water maker 65 lt/h in bow technical locker

Additional Custom Options

Alfa Laval fuel polisher
2 x Stainless steel anchors
Second control station with JPS joystick in cockpit
Tropical A/C upgrade 144,000 BTU (std 104,000)
All sockets (interior + exterior) UK model (diff.from EU model)
Weathertight 220V socket in fly bar cabinet & in aft cockpit stbd locker
Diving air compressor Bauer inside beach area front storage with 220V weathertight socket
Rack for diving tanks in front storage of beach area

Dinghies and Outboards

Tender Williams diesel jet D445

Disclaimer

The Company offers the details of this vessel in good faith but cannot guarantee or warrant the accuracy of this information nor warrant the condition of the vessel. A buyer should instruct his agents, or his surveyors, to investigate such details as the buyer desires validated. This vessel is offered subject to prior sale, price change, or withdrawal without notice.

CONTACT INFORMATION

Seen a Yacht you like? Contact our team now to arrange your virtual viewing. We will be happy to step on board and host a video call with you, allowing you to look around the yacht in person and direct us to the features and areas which interest you the most. We are open, boat yards are open and independent surveyors are available. We are ready to do business and can ship yachts to any region in the world. We look forward to hearing from you soon.

HOW CAN WE HELP?

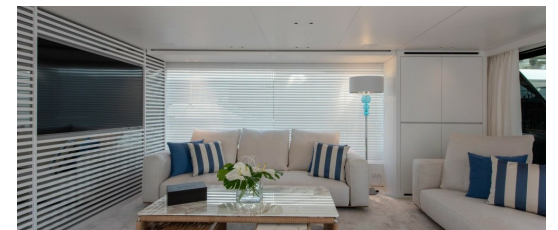
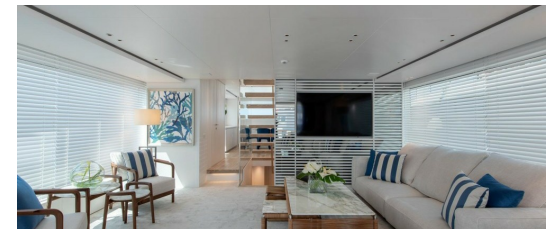
E: brokerage@simpsonmarine.com T: +852 2555 8377

[SIMPSONMARINE.COM](https://www.simpsonmarine.com)

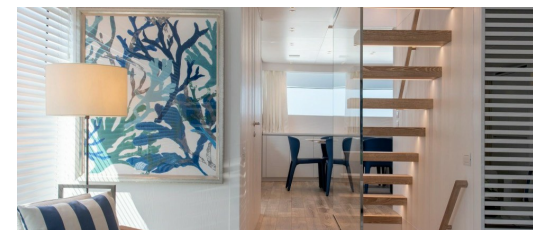
SANLORENZO SX88



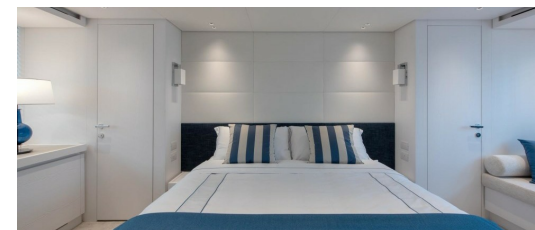
SANLORENZO SX88



SANLORENZO SX88



SANLORENZO SX88



SANLORENZO SX88

